



AUSTRALIAN CONSTRUCTION SUPPLIES





A-121 1570 x 670 x 600mm



A-122 1650 x 710 x 540mm



A-123 1700 x 870 x 550mm



A-123B 1700 x 870 x 550mm



A-124 1820 x 920 x 520mm



A-125 1500 x 680 x 530mm



A-126 1670 x 750 x 540mm



A-127 1800 x 900 x 500mm



A-129 1700 x 780 x 550mm



COCO100 1700 x 750 x 580mm



COCO101 1690 x 750 x 880mm



COCO102 1700 x 720 x 550mm



COCO103 1700 x 1000 x 550mm



COCO104 1350 x 1350 x 490mm



A-130 1690 x 790 x 470mm

CUTTING EDGE

- 10 Year Manufacturers Warranty
- 25mm Solid Walls
- 70% Reconstituted Limestone
- Smooth Solid Finish
- Genuine Weighted Stone Bath
- Excellent Heat Retention
- Repairable If Damaged
- Easy Installation With Unique Flexible Plumbing
- Easy To Maintain



FR-26 1800 x 900 x 800mm



FR-04 1500 - 1900mm



A-012 1500/1800 x 620mm



A-037 1800 x 900 x 600mm



A-044 1600 x 800 x 500mm



A-040 1800 x 850 x 580mm



A-045 1700 x 800 x 600mm



A-046 1300 x 850 x 580mm



A-308 1300/1500/1800mm



A-322 1700 x 850 x 600mm



A-324 1300 x 1300 x 580mm



A-327 1400 x 750 x 580mm



A-810 1000 x 750 x 700mm



A-813 1700/1800mm



A-818 1700/1800mm

AFFORDABLE LUXURY

- 10 Year Manufacturers Warranty
- 8mm Heavy Gauge Acrylic
- Double Sheeted Walls & Fibreglass Reinforcement
- Smooth Solid Finish
- Galvanised Metal Base Frame & Supports
- Excellent Heat Retention
- Repairable If Damaged
- Easy Installation With Unique Flexible Plumbing
- Easy To Maintain



AUSTRALIA'S ONLY CUSTOM FREESTANDING HYDROTHERAPY SYSTEMS

ACS Hydrotherapy Systems for Acrylic Baths

In the pursuit of innovative design, ACS is proud to offer a unique product to the Australian market. ACS is one of the first companies to offer a full Hydrotherapy system on freestanding and drop in acrylic baths (Over 150 models).

Based around today's minimalist trend, the system features touch pad control or remote control option. All Hydrotherapy systems sold by ACS are Australian made and are manufactured according to strict ISO9001:2000 Quality Management System guidelines, using state of the art facilities.

The hydro jets are positioned in specific areas to give you maximum hydrotherapeutic benefits. Jets are set in groups, corresponding to those muscles in the body which commonly work together. This specific jet positioning concentrates on your pressure points which result in stress and pain relief (Back, feet, thighs) this also brings fresh, oxygenated blood and other nutrients to the cells, while improving your levels of health and wellbeing.

- Non Intrusive Passage Massage*
- Trigger Point Jetting*
- Reconstituted Limestone Tops
- Standard Configurations
- 10 - 24 - 30 Jet Hydrotherapy Systems
- Custom Systems Available POA

* EXCLUSIVE SYSTEMS



QUALITY MEETS PRACTICALITY

Electric Heated Rails

- 2 Year Manufacturers Warranty
- 304 Grade Stainless Steel
- Plug In & Hard Wire Kit Included
- AUS/NZ SAA Certified
- 11 Sizes & Models Available

BASINS

STONE



CUUB084 555 x 400 x 840mm



CUUB083 400 x 400 x 820mm



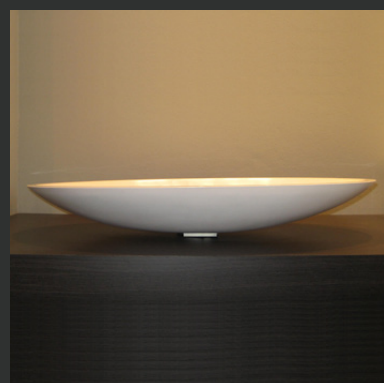
CUUB081 500 x 370 x 830mm



COCO30 330 x 330 x 260mm



COCO37 600 x 460 x 400mm



CUUB03M 630 x 375 x 100mm



COCO31 510 x 510 x 260mm



COCO33 500 x 300 x 150mm



COCO34 750 x 325 x 150mm

PORCELAIN



A-V-3215 550 x 530 x 200mm



PD-4181 460 x 280 x 170mm



PD-4191 450 x 275 x 120mm



COCO15 500 x 300 x 610mm



COCO17 900 x 480 x 670mm



COCO18 1200 x 400 x 550mm



COCO55 600 x 380 x 550mm



COCO57 800 x 460 x 550mm



COCO65 809 x 460 x 500mm



COCO71 700 x 500 x 500mm



COCO72 900 x 500 x 500mm



COCO73 1500 x 500 x 500mm



COCO02



COCO03



COCO05



COCO07



COCO09

GERMAN PRECISION

Vanities

- 5 Year Manufacturers Warranty
- Fitted With BLUM Interiors
- Reconstituted Limestone Tops
- Smooth Solid Finish
- 3 Colour Options

Accessories

- 5 Year Manufacturers Warranty
- 304 Grade Stainless Steel
- Multiple Fixing Points For Security
- Easy To Maintain



XL-1288 BTW S/P Trap



RAK-07 BTW S/P Trap



KN209-3 BTW S/P Trap



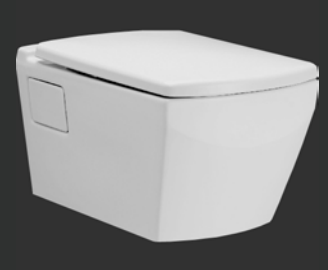
XL-1288FL WFP P Trap



W01 WFP P Trap



V01-A WFP P Trap



V01-B WHP P Trap



RAK-01 WFP P Trap



RAK-03 WHP P Trap



KN209-6 WHP P Trap



KN209-5B WHP P Trap



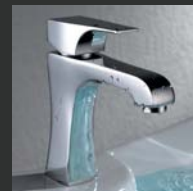
31 8103 2S



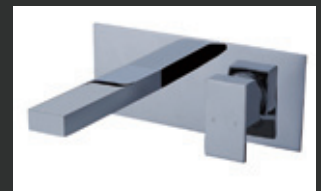
13 1030 32S



12 7020 33S



10 1010 44S



48 8105 9S

EUROPEAN QUALITY

Toilets

- 5 Year Manufacturers Warranty
- GEBERIT Flushing Systems
- 4 Star WELS Rating
- Soft Close Seats On All Models
- Special 'Ultra Glazing' Technology

Tapware

- 5 Year Manufacturers Warranty
- German Mixer Cartridges
- Smooth Action Movement
- 3 Star WELS Rating

classic tale

A dash of design flair transforms a dowdy Victorian-era bathroom into a royal beauty

WORDS VANESSA KEYS
STYLING STEPHANIE POWELL
PHOTOGRAPHY CRAIG WALL



RUB A DUB DUB

Who doesn't dream of a freestanding slipper bath to sink into at the end of a long day? Seriously sumptuous, this freestanding slipper bath from Australian Construction Supplies is the epitome of luxury, giving the room a strong focal point. "The bathroom is so spacious that it needed something grand to tie its elements together," says interior designer Charles. "This beautiful bath very nearly didn't make it into the final room. Just before the renovation was complete, a chandelier that originally hung above it fell, shattering into a million pieces and severely damaging the acrylic tub. Needless to say, the bath and chandelier were totally ruined but we all learnt a valuable lesson - install the lighting before the bath!" says Charles. The elegant spout tap, also from Australian Construction Supplies, emphasises the bath's minimalist lines and brings sleek contrast to the room.



SET IN STONE

A NEUTRAL COLOUR SCHEME, NATURAL MATERIALS AND A SPACIOUS LAYOUT
MAKE FOR A CALMING FAMILY BATHROOM

WORDS & STYLING Helen Adams PHOTOGRAPHY Craig Wall



Design tip

When choosing a window treatment, consider shutters, which provide privacy, an abundance of light and timeless style

1

Home Beautiful (ESSENTIAL BATHROOM GUIDE)

FR-26 BATH FEATURE

Home Beautiful Top 50 Bathrooms 2010

Number 1 Bathroom 2010

- * Australia's Largest Range Of Freestanding Baths
- * Direct Importer - Direct Seller
- * International Product Sourcing
- * European Design & Quality
- * Personalised Service & Design Advice

FR-04 BATH FEATURE

Home Beautiful Top 50 Bathrooms 2010

- * Shipping Australia Wide & New Zealand
- * Friendly Service
- * Premium Quality
- * Direct Importer - Direct Seller
- * Over 10 Years Experience

www.acsupplies.com.au

CHATSWOOD

Unit 36/28 Barcoo Street
Chatswood NSW 2067
T +61 02 9882 2044
F +61 02 9882 2066

WOOLLAHRA

163 Edgecliff Road
Woollahra NSW 2065
T +61 02 9386 9809
F +61 02 9386 9810

CONTACTS

E sales@acsupplies.com.au
W www.acsupplies.com.au

HOURS

Mon-Fri 09:00 - 17:00
Sat 10:00 - 14:00